

# Global Progress in Malaria Control

2010–2015

**29%** Malaria mortality rates fell **29%** globally

**21%** New malaria cases fell **21%** worldwide

**31%** Malaria mortality rates fell **31%** in the World Health Organization's African region

## Tracking Malaria: Areas of Prevalence

Malaria control efforts take place on a national scale to increase prevention and reduce habitat for the mosquito vector.

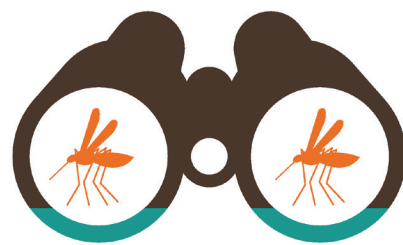
As malaria cases decrease, a more precise surveillance system is needed to combat the disease.

### High or Moderate Prevalence



#### Rate of transmission

High or moderate parasite prevalence in children ages 2–9 years > 10%



#### Malaria surveillance system

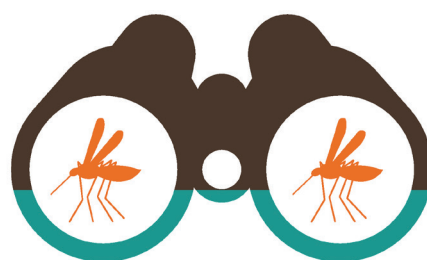
Health facilities report aggregate data to district or national registers, where cases and deaths are summarized monthly to assess malaria control interventions.

### Low Prevalence



#### Rate of transmission

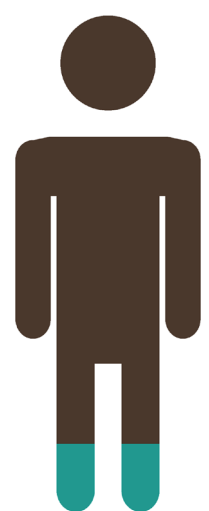
Low parasite prevalence in children ages 2–9 years < 10%



#### Malaria surveillance system

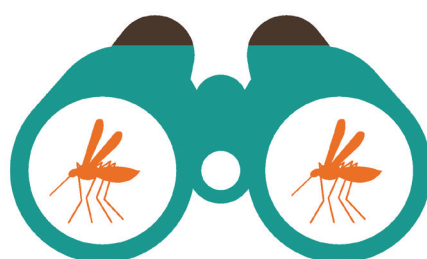
Health facilities track malaria inpatient cases and deaths and continue to report aggregate data. District and national administrators assess interventions and identify trends that require an urgent response.

### Very Low Prevalence



#### Rate of transmission

Very low  
Cases occur sporadically or in distinct areas



#### Malaria surveillance system

Surveillance triggers a locally tailored response to every detected infection. Districts maintain a register of severe cases and deaths and investigate to identify and address program weaknesses.

Source: World Health Organization